

RE031-Outdoor Camera Quick Set-Up

Features

- 1/4" CMOS Sensor in VGA Resolution
- Dual-band Lens for Day and Night Function
- Built-in IR Illuminators, Effective up to 10 Meters
- Real-time H.264, MPEG-4 and MJPEG Compression (Triple Codec)
- Simultaneous Dual Streams
- Weather-proof IP66-rated Housing
- Built-in 802.3af Compliant PoE
- 12V DC 24V AC power



Assembly

- Remove camera from packaging
- Line up black weather-proof hood housing indent to camera indent (right)
- Secure in place
- Remove mounting set from packaging
- Place screws into both holes on either side of the camera stem (below)
- Screw into desired location



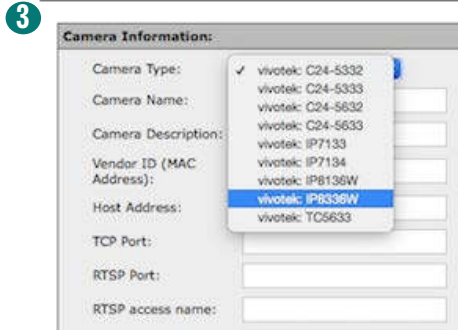
Blinking green: online and connected
Solid green: local connectivity to wireless router, but no established interactive connection
Blinking red: firmware upgrade
Solid red: incorrect Wi-Fi settings
Solid blue: privacy mode
Blue/green alternating: AP mode

Privacy mode is activated by pressing WPS button for 1-2 seconds
WPS mode is activated by pressing and holding WPS button for 6-9 seconds

To place camera back into AP mode, press and hold the WPS button for 12 seconds

Dealer portal setup:

- Ensure camera is powered down
- Select “Accounts” on left side. Load customer’s account
- Select “Camera” on left side. Select “Add” to add a camera
- Select camera type from drop down menu. Select: “vivotek IP8331W”. Enter name and description if desired
- Enter camera MAC address. This is located on back of camera
- Enter the following user name and password: UN: root PW: Camera’s MAC ID
- Select “Add”
- Power camera back up
- Camera LED will be red then blink green and blue



Wi-Fi Setup when router has no WPS button:
If it does have WPS: Open bottom camera slot exposing the WPS button (previous page) press & hold WPS button on camera & router. LED will flash green.

- You will need a smartphone or computer
- In your devices wifi settings find the network named TCSN-(last 6 of MAC XX:XX:XX)
- Once connected, camera will be flashing blue and green. This indicates the camera is in access point mode (AP mode)
- On your smartphone or computer open a web browser. Enter "http://192.168.1.1" without quotes
- The page will open to a login screen.
- Username: root
- Password : (MAC address all upper case)
- Select "Search your AP"
- Select your WiFi network
- Enter the WiFi password in the Pre-shared key field, removing the string of 0's
- Save, image number 4 will appear
- After a moment the camera light will go from solid green to blinking green, this will indicate the camera is connected

